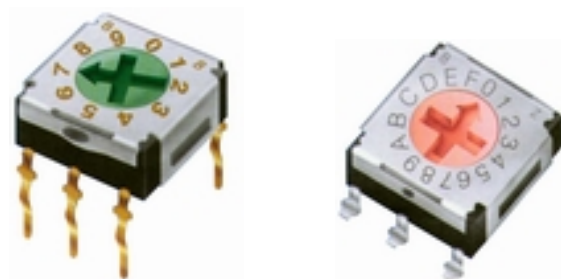


ERD6 SERIES

SMALL SIZE 7x7 ROTARY TYPE



FEATURES

- Flat type with outer dimensions 7.2mm square; 4.0mm high on board for through hole type and 3.6mm high on board for surface mounting type.
- Top size 7.2x3.5mm², 8mm high on board for side adjust type.
- Positions (10,16) and switch code can be identified by color rotor.
- Gold plated contact area ensures reliable electric continuity for micro current.

SPECIFICATIONS

1 . ELECTRICAL

Contact rating	
Max. switching load	100 mA, 50 VDC
Min. switching load	10 μ A, 5 VDC
Contact resistance	200 m Ω Max., 1.5mA, 200 μ VDC
Insulation resistance	100 M Ω Min., 100 VDC
Dielectric strength	250 VAC (rms), 60 sec.

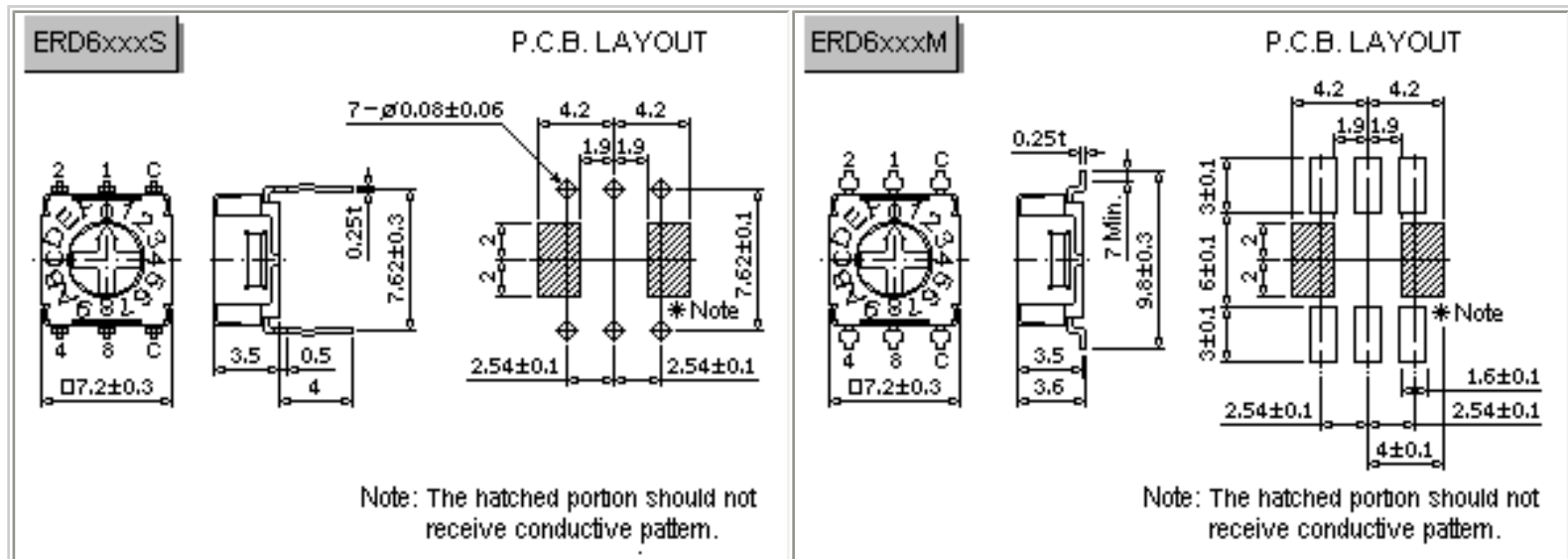
2 . MECHANICAL

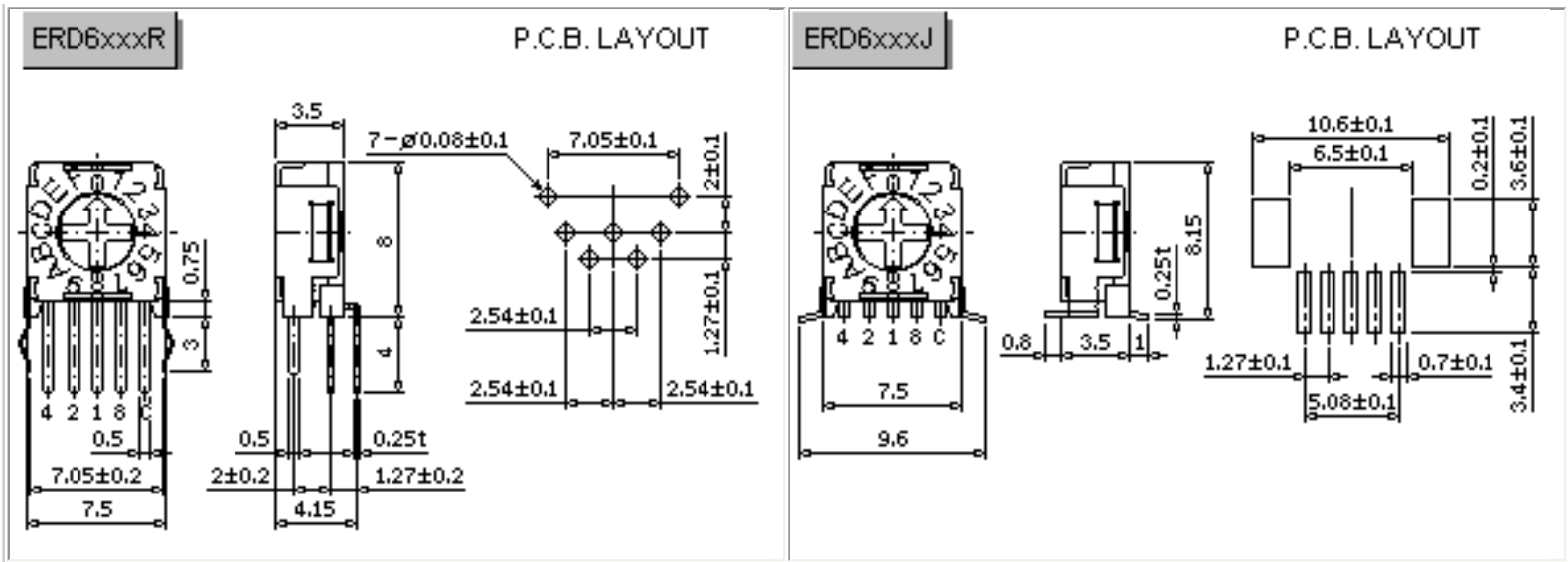
Temperature rating	
operating	-25°C ~+70°C
storage	-25°C ~+85°C
Operation force	510 gf-cm Max. (Rotational torque)
Durability	10000 detents Min.

PART NUMBERING SYSTEM

ERD	6	10	C	S	A	C
+--- Rotor: C:"minus", No letter:"plus"						
+--- Ground Terminal: No letter:without, A:with						
+--- Setting: S:Standard Type (Top Adjust Type) R:Right Angle Type M:Surface Mounting Type in Tube Package J:Right Angle with Surface Mounting Type in Tube Package D:Surface Mounting Type in Tape & Reel Package T:Right Angle with Surface Mounting Type in Tape & Reel Package						
+--- Code: R:Real, C:Complement						
+--- Number of positions: 10,16						
+--- 7.2x7.2 mm ² , Flat Type						
+--- Series Name: ERD:Rotary DIP Switch						

DIMENSIONS AND CIRCUITRY (UNIT: mm)





INTRODUCTION to USE ROTARY DIP SWITCH

SIZE	POSITIONS	CODE	PIN OUT	ROTOR	TYPE	PART NUMBER
7x7	10,16	REAL, COMPLEMENT	3:3	FLAT	STANDARD	ERD6xxxSxx
			3:2		RIGHT ANGLE	ERD6xxxRxx
			3:3		SMT	ERD6xxxMxx
			5:0		RIGHT ANGLE WITH SMT	ERD6xxxJxx
			3:3		SMT IN T&R	ERD6xxxDxx
			5:0		RIGHT ANGLE WITH SMT IN T&R	ERD6xxxTxx